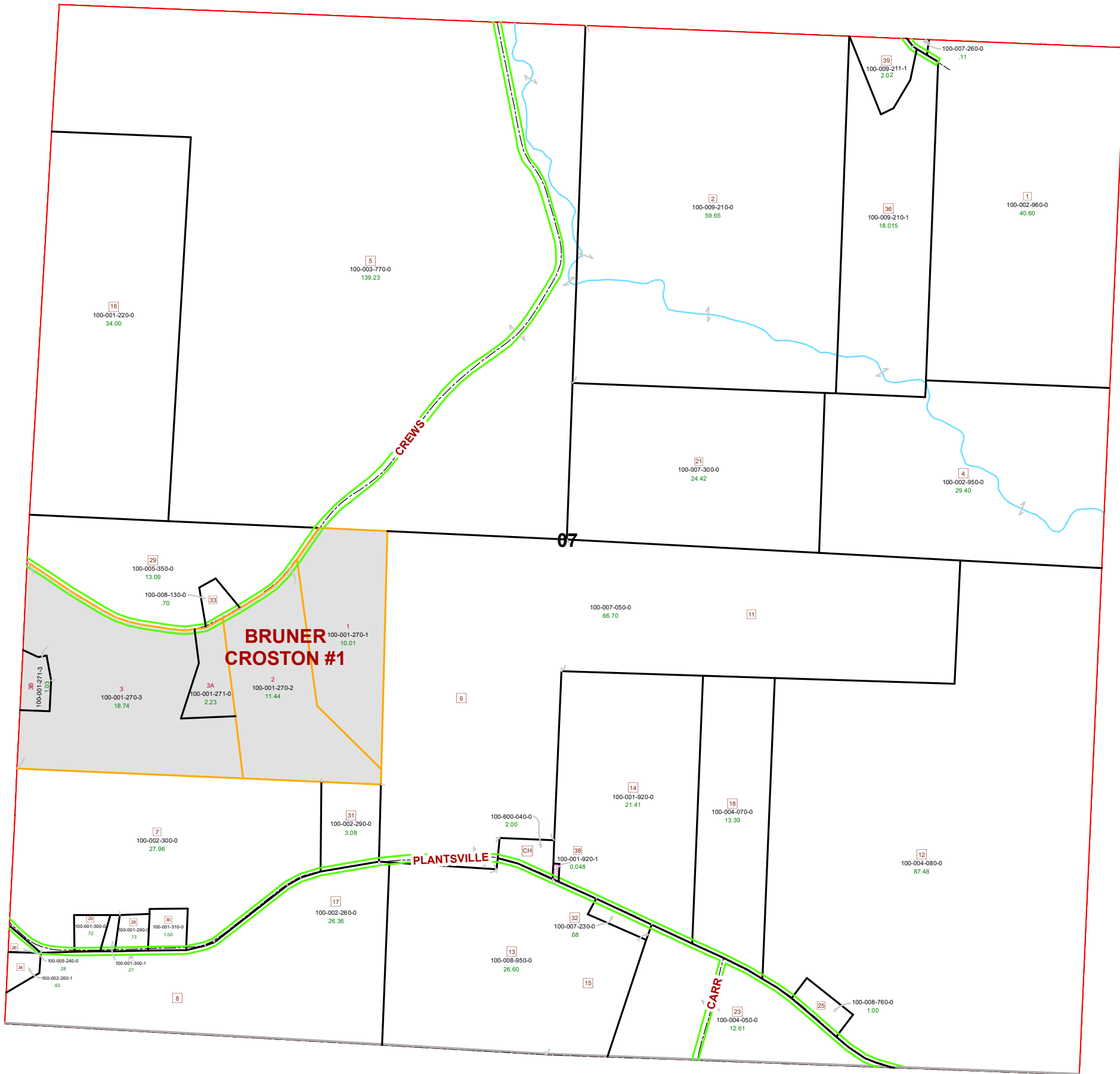


# MARION TOWNSHIP SECTION 7 R12 TWP 8 MORGAN COUNTY, OH



PIN	Owner	VOL	PAGE	LegalDescr	Acres
100-600-040-0	CHURCH BETHEL PENTECOSTAL			R00 T00 S07	2
100-009-210-0	DAY FAMILY TRUST C/O PATRICIA A DAY T	OR228	1242	R12 T08 S07 SD 2	59.655
100-009-210-1	DAY FAMILY TRUST C/O PATRICIA A DAY,	OR228	1236	R12 T08 S07 SD 36	18.015
100-009-211-1	FIRST NATIONAL ACCEPTANCE COMPANY	OR230	897	R12 T8 S7 SD39	2.02
100-002-260-0	GOINS WILBUR & ROBERT & EVA DUSAN T	OR91	259	R12 T08 S07 SD 8-1	26.362
100-002-950-0	HILL HARRY LEE ET7AL	OR216	2041	R12 T08 S07 SD 4	29.4
100-002-960-0	HILL HARRY LEE ET7AL	OR2016	2041	R12 T08 S07 SD 1	40.6
100-004-050-0	JEFFERS' TREE FARM LLC	OR145	430	R12 T08 S07 SD 23	12.61
100-004-070-0	JEFFERS' TREE FARM LLC	OR145	430	R12 T08 S07 SD 18	13.39
100-001-290-0	MATHENY WILLIAM B	OR216	2126	R12 T08 S07 SD 28	0.7244
100-001-310-0	MATHENY WILLIAM B	OR216	2126	R12 T08 S07 SD 30	1
100-001-300-1	MATHENY WILLIAM B	OR216	2126	R12 T08 S07 SD 37	0.2748
100-005-350-0	MAYLE DOWDEN C & BONITA	OR43	339	R12 T08 S07 SD 29	13.098
100-008-130-0	MAYLE DOWDEN C & BONITA S	OR62	502	R12 T08 S07 SD 33	0.702
100-005-240-0	MAYLE RICHARD KEITH & DORETTA	D.V 171	487	R12 T08 S07 SD 26	0.28
100-001-300-0	MAYLE RICHARD KEITH & DORETTA A	OR171	106	R12 T08 S07 SD 29	0.7152
100-002-300-0	MAYLE RICHARD KEITH & DORETTA A & RO	OR183	770	R12 T08 S07 SD 7	27.969
100-002-260-1	MAYLE RICHARD KEITH & DORETTA ANN	OR91	324	R12 T08 S07 SD 34	0.638
100-008-760-0	MAYLE ROSS E	OR231	3353	R12 T08 S07 SD 25	1
100-002-290-0	NORMAN LORI L	OR223	675	R12 T08 S07 SD 31	3.08
100-007-230-0	NORMAN THOMAS D	OR206	2463	R12 T08 S07 SD 32	0.68
100-001-920-0	RICHARDSON DONALD L & MARTHA J TRU	OR122	86	R12 T08 S07 SD 14	21.4172
100-001-920-1	RICHARDSON FAMILY CEMETERY	OR219	3463	R12 T08 S07 SD 38	0.0488
100-007-260-0	RUSH RYAN E	OR233	4976	R12 T08 S07 SD 2 P	0.11
100-008-950-0	THOMPSON HARRY D & PEGGY B COOK	D.V 172	713	R12 T08 S07 SD 13-	26.6
100-004-080-0	WILLIAM JEFFERS FAMILY TREE FARM LTD	OR207	1289	R12 T08 S07 SD 12	87.48
100-007-300-0	WILLIAM JEFFERS FAMILY TREE FARM LTD	OR207	1289	R12 T08 S07 SD 21	24.42
100-001-220-0	WILLIAM JEFFERS FAMILY TREE FARM LTD	OR207	1298	R12 T08 S07 SD 16	34
100-003-770-0	WILLIAM JEFFERS FAMILY TREE FARM LTD	OR207	1298	R12 T08 S07 SD 5	139.23
100-007-050-0	WILLIAMS ROGER OGDEN BRIAN EDWARDS D.V	199 114		R12 T08 S07 SD 9-1	66.7



Boundaries	
----- Hidden	--- ROW
----- Hydro	--- Section
----- Roads	--- Township
----- County	--- Parcel
----- Lot	--- Parcels



Disclaimer: The information that these maps contains is for reference purposes only. Please bring any erros to the attention of the Engineer's Office staff.

Thank you

Source: Morgan County Engineer's Office  
 Author: Marcia Wolfe  
 Date: 7/1/2020

